

POWERED REMOTE VOLUME CONTROL, Type PRVC3

The Powered Remote Volume Control is an accessory which may be used with Seeburg phonographs to remotely control the volume and to cancel selections. It consists of a volume control drive motor and control unit which are interconnected by means of a five-wire cable (not included). Any reasonable length of cable may be used without introducing losses or having any effect on the sound. 100 to 150 foot cable length is practical. The cable, Part No. 508712, is available from your Seeburg Distributor in any length required.

NOTE:

Existing remote volume control cable installations may be used by removing the plug and the remote volume control unit.

CAUTION:

Do NOT use shields as conductors.

A slip clutch drive permits volume adjustment at the phonograph independently of the remote volume control.

INSTALLATION INSTRUCTIONS

1. Determine location for the Remote Volume Control and best routing for the cable, keeping in mind appearance and possibility of physical damage to the cable as well as convenience of control.
2. On the amplifier, remove the top screw and loosen the bottom screw on the front of the volume control bracket, see Figure 1.
3. Remove pin in volume control by depressing ball retainer plate and insert the Drive Shaft Assembly until it bottoms.
4. Align the drive pin of the Drive Shaft with the slot in the Drive Motor Coupling.
5. Install the Drive Motor and Bracket Assembly into place by sliding the slotted end of the Motor Mounting Bracket over the bottom screw on volume control bracket. Replace the top screw and tighten the bottom screw.
6. Strip and trim phonograph end of 5-wire cable as shown in Figure 2. Connect cable to drive motor, ground screw, and to the 2-screw terminal board on the amplifier, see Figure 4.
7. Remove the plate covering the hole in the back of the phonograph and feed the 5-wire cable through the hole.
8. Fasten the cable to the inside wall of the cabinet with a clamp, allowing enough slack cable in the cabinet to avoid strain on cable or connections.
9. Lay the cable from the cabinet to the Remote Volume Control, passing the cable loosely over pipes and through necessary holes in walls and floors.
10. Remove the center screw from the PRVC3 and remove bottom plate.
11. Lift out the Terminal Panel in the PRVC3 and connect the 5-wire cable to the screw terminals, Figures 4 and 5. Exercise caution so as not to crack panel.
12. Place Terminal Panel in position and apply strain relief clamp to cable.
13. Insert Terminal Panel Insulator, as shown in Figure 3.
14. If control unit is to be set on counter top, insert rubber feet into Bottom Plate and assemble to unit with the 6-32 x 1-3/16 screw.
15. If the control unit is to be permanently attached, fasten the bottom plate to a shelf or counter with the No. 6 sheet metal screws.

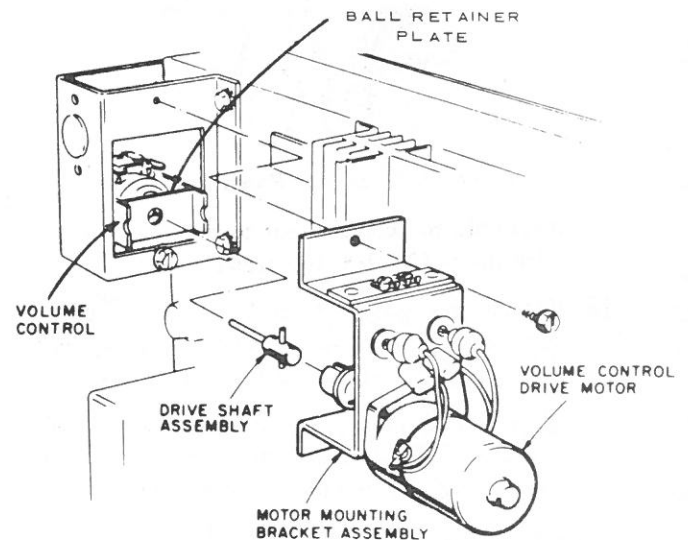


Figure 1. Drive Motor and Bracket Installation.

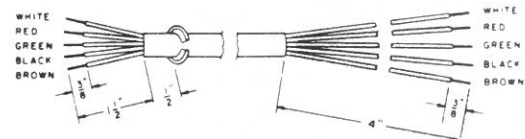


Figure 2. Cable Preparation.

POWERED REMOTE VOLUME CONTROL, Type PRVC3

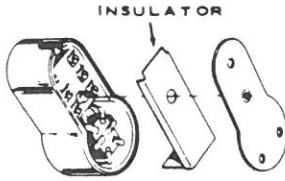


Figure 3. Terminal Panel Insulator.

Assemble the control unit to the bottom plate with the 6-32 x 1-3/16 screw.

16. Fasten the cable securely, starting at the control with a clamp adjacent to the control box. Take up excess cable as it is fastened.
17. When the cable is installed, leave enough slack to permit moving the phonograph from the wall for maintenance and cleaning.

REMOVAL OF DRIVE MOTOR

When the volume control drive motor and drive shaft are to be removed, it is essential that the ball retainer plate on the volume control be pressed down before extracting the Drive Shaft.

CAUTION:

Failure to do this may damage the volume control.

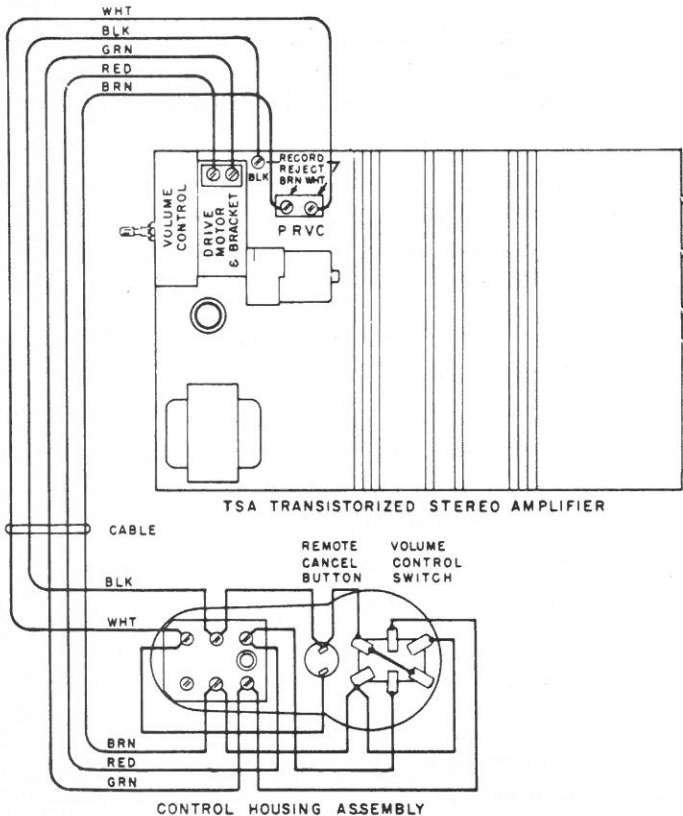


Figure 4. Wiring Diagram.

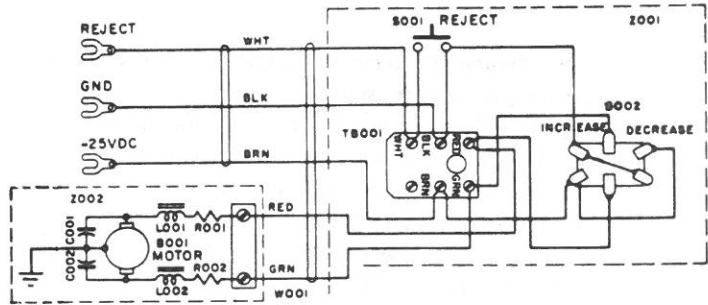
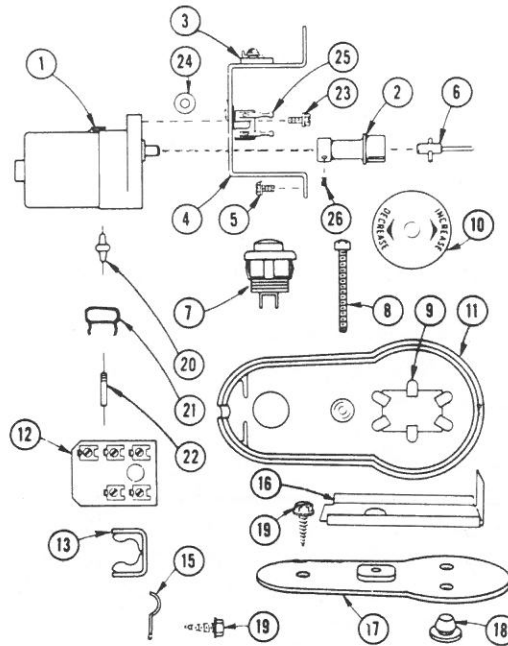


Figure 5. Schematic Diagram.

PARTS LIST



Item	Part No.	Description
-	509210	Type PRVC3 Powered Remote Volume Control
1	509220	Volume Control Drive Motor (Barber-Coleman)
2	508914	Coupling
3	508913	Terminal Panel
4	508928	Motor Mtg. Bracket Assembly
5	960698	6-32 x 1/4 Hex Washer H. Self Tap Screw
6	508916	Drive Shaft Assembly
7	306864	Selection Cancel Button
8	913675	6-32 x 1-3/16 Phillips Fil. H.M.S.
9	508897	Switch
10	508899	Switch Plate
11	508896	Control Housing
12	508901	Terminal Panel
13	503182	Strain Relief
15	402098	Cable Clamp
16	508904	Terminal Panel Insulator
17	503882	Button Plate Assembly
18	503183	Rubber Foot
19	960688	No. 6 x 1/4 Hex Washer H. Sheet Metal Screw
20	508923	Choke
21	86343	0.022 Mfd. Mylar Condenser, 200 V. 20%
22	82407	39 Ohm Resistor
23	960697	6-32 x 1/4 Hex Washer H. Self Tap Screw
24	988161	Grommet
25	410717	Terminal Strip
26	918301	6-32 x 1/8 Socket H. Cup Pt. Set Screw