

SEEBURG

DISCOTHEQUE DANCE CONVERSION KIT, Type DDC1K, PART NO. 509520

The Discotheque Dance Conversion Kit, Type DDC1K, is used to convert an LPC480 Model phonograph to an LPC480D Model. The purpose of this conversion is to enable the phonograph to operate as a Discotheque Music Center – featuring exclusive Seeburg Rec-O-Dance records – as well as a standard phonograph.

The mode of operation is controlled by a switch at the rear of the cabinet. When in the "DISCOTHEQUE" position, only Rec-O-Dance records will be played, that is, the playing of standard Singles and Albums will be suspended and the Album Award feature will not operate during Discotheque operation. Album and Single selections will be stored in the Tormat Memory Unit and will be played only after the DISCOTHEQUE switch is restored to the "NORMAL" position.

The phonograph should be programmed with Rec-O-Dance records in record groups three through eight.

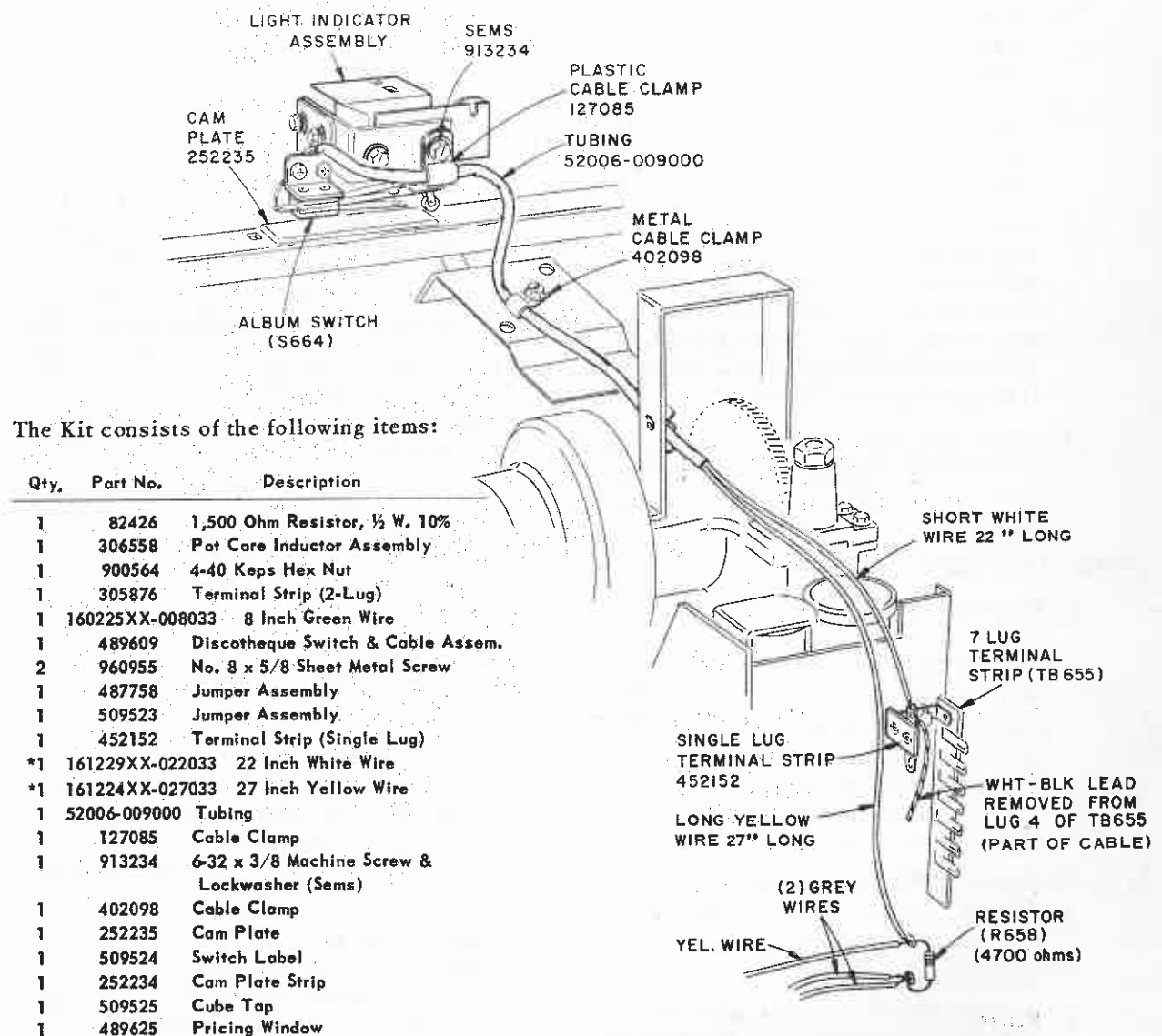


Figure 1. Mechanism Modification.

- CONVERSION INSTRUCTIONS -

A. SELECT-O-MATIC MECHANISM

(See Figure 6 for Schematic)

1. Light Indicator Assembly

- Disconnect the three wires (white-grey; grey; and white-black) from the Album Switch (S664), see Figure 1.
- Remove the white-black 3-inch jumper entirely.
- Twist together and solder the grey and the white-grey wires. Insulate this junction with a small piece of tubing and tape tubing in place.

2. From Kit (See Figure 1)

- Mount new Single Lug Terminal Strip (Part No. 452152) under top screw of 7-lug terminal strip (TB655).
- Unsolder and remove from lug 4 of TB655 the white-black wire (in cable) and solder to the Single Lug Terminal Strip.
- Insert the white and yellow wires into sleeving (furnished in kit) and fasten to mechanism using the metal cable clamp (Part No. 402098) with existing screw and plastic cable clamp (Part No. 127085) with new sems screw (Part No. 913234), as shown in Figure 1.
- Solder the yellow wire to the center contact blade and the white wire to the lower contact blade of the Album Switch (S664).

NOTE: Upper blade is now dead.

- Dress the white and yellow wires down to the switch plate. Solder the white wire to the new Single Lug Terminal Strip forming a junction with the white-black wire. Solder the yellow wire to R658 (4700 ohm, $\frac{1}{2}$ watt, $\pm 10\%$ resistor). This connection is to be on the same end of R658 that the yellow wire to the reversing switch is attached.

3. Mechanism Cable Revision (See Figure 3)

- Remove white-black wire from center hole of three contact nylon connector (P655).
- Remove existing contact and connect new Jumper Assembly (Part No. 509523) as shown in Figure 3. Solder and tape connection.

4. Cam Plate Strip Revision

- Remove old Cam Plate Strip and replace with new Cam Plate Strip (Part No. 252234). The new Cam Plate Strip has longer mounting slots and should be positioned as shown in Figure 2.

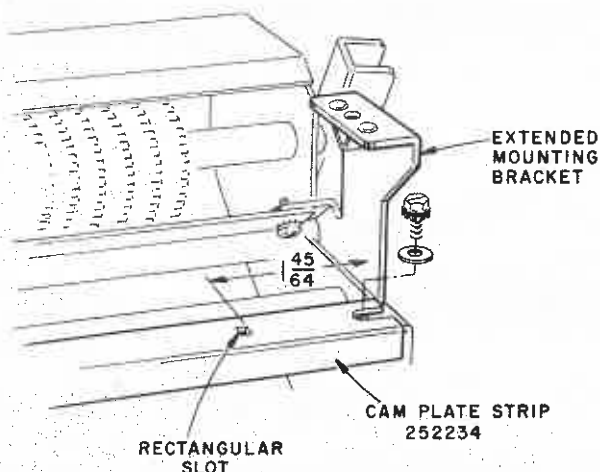


Figure 2. Mounting of New Cam Plate Strip.

- Install Cam Plate (Part No. 252235) in each group that is being programmed for Discotheque records (old or new Cam Plates can be used).

5. Album Switch Adjustment

- When roller of center contact blade is up on top of plastic Cam Plate, the contact gap should be $\frac{1}{64}$ inch minimum.
- When the roller is off the plastic Cam Plate and touching the top surface of the Cam Plate Strip, the contact force between the center blade and lower blade should be 1 ounce minimum.

B. CABINET CABLING (See Figure 3)

- Position Discotheque Switch Mounting Plate so that Discotheque Switch is centered in the "keyhole" slot (cable access hole) on rear of cabinet and so that the line cord connections are as shown in Figures 3 and 4. Mount plate to cabinet using screws provided (Part No. 960955). Remove and discard cable hole cover that is on outside of cabinet.
- Remove Album Scan Control plug from socket.

DISCOTHEQUE DANCE CONVERSION KIT, Type DDC1K

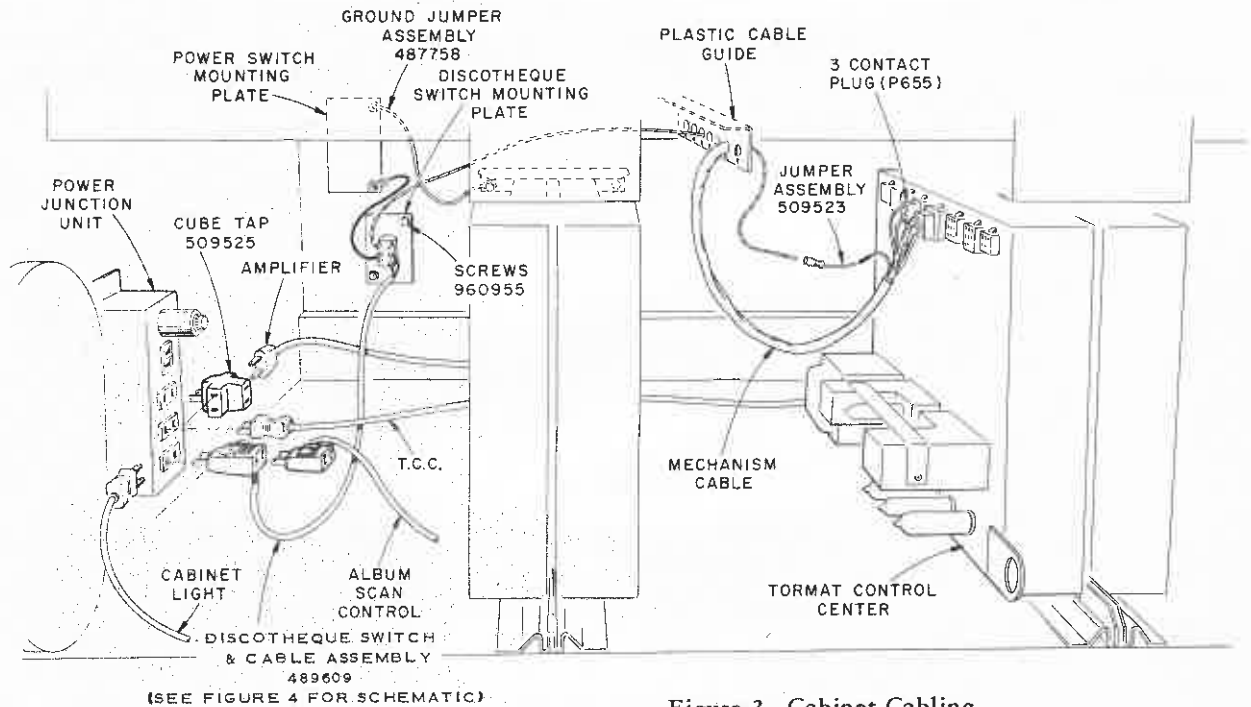


Figure 3. Cabinet Cabling.

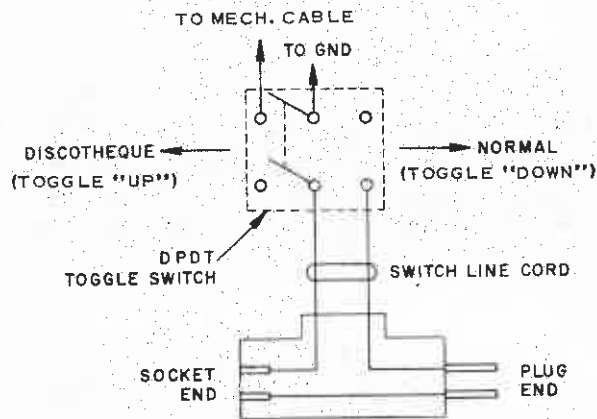


Figure 4.

Discotheque Switch and Cable Assembly Schematic.

3. Insert plug of new Discotheque Switch and Cable Assembly (Part No. 489609) into socket vacated by Album Scan Control plug.
4. Insert Album Scan Control plug into top of new Discotheque Switch and Cable Assembly plug.
5. Remove plug from uppermost switched receptacle of Power Junction Unit.
6. Insert Cube Tap (Part No. 509525) into socket vacated in step 5.
7. Remove the line cord, plugged into the top of the Album Scan Control plug, and insert it and the plug removed in step 5 into the Cube Tap.

8. Loosen lower right hand screw on Power Switch Mounting Plate and slide lug of black wire from Discotheque Switch under screw head; tighten screw.
9. Dress the white-black wire from Discotheque Switch up over slide channel into plastic Cable Guide and plug pin into single prong of mechanism cable. If insulated sleeving is not crimped, make sure loose sleeving is slid over this connection and insulates it completely.

10. Check to see if there is a green ground wire between Power Switch Mounting Plate and Amplifier Slide Channel. If not, connect Jumper Assembly (Part No. 487758) as shown in Figure 3.

11. Move Reject Switch Wires from Tormat Control Center chassis to terminals marked BLACK and WHITE on terminal board marked PRVC of Amplifier.

NOTE: DO NOT connect any lead to BROWN terminal by mistake.

12. Affix Switch Label (Part No. 509524) on rear of cabinet to the left of the Discotheque Switch.

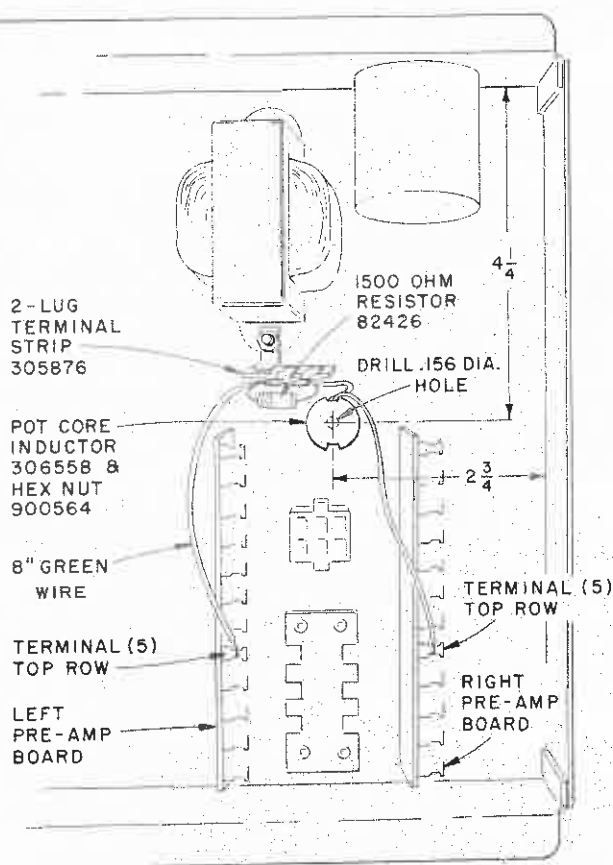


Figure 5. Amplifier Wiring Diagram.

C. AMPLIFIER (See Figure 5)

1. Remove all connections to Amplifier and slide Amplifier out of channel.
2. Locate hole for Pot Core Inductor per Figure 5.
3. Drill 0.156 diameter hole and mount Pot Core Inductor (Part No. 306558) as shown with Hex Nut (Part No. 900564).

CAUTION: DO NOT remove or readjust hex nut already assembled to Pot Core Inductor.

4. Remove hex nut and washer from transformer and mount 2-Lug Terminal Strip (Part No. 305876) as shown.
5. Connect green jumper wire (furnished in kit) between terminal 5 on the top row of the left pre-amp board and the left terminal of the new strip as shown.
6. Connect 1,500 Ohm Resistor (Part No. 82426) across Terminal Strip as shown.

7. Connect one lead of Pot Core Inductor to the right terminal of strip and one lead to terminal 5 on the top row of the right pre-amp board as shown.

D. PRICING OF DISCOTHEQUE GROUPS

1. Change pricing tabs on Electrical Selector, Service Switch Assembly and Consolettes (if used) for album (half dollar) operation for each group that is being programmed for Discotheque records.
2. Replace existing Pricing Window with new window (Part No. 489625).
3. Alternate pricing combinations are available with Pricing Windows, Part Nos. 489626, 489627, and 489628. Use Pricing Window Kit, Part No. 509142, for programming with 25¢ and 50¢ only. All these are available from your Seeburg Distributor.

E. DECAL and MERCHANDISER

A special Discotheque Program Frame Decal (Part No. 489620), and Discotheque Program Merchandiser Package (Part No. 509426), are available from your Seeburg Distributor as part of the Discotheque Dance Promotional Kit, Type DDK1, Part No. 509400.

F. RECORDS and TITLE STRIPS

Load Rec-O-Dance records and Title Strips in the groups now programmed for these records.

G. TEST

1. Place the Discotheque Switch in the "Discotheque" position. Select one Single, one Album and one Discotheque record. The mechanism should play only the Discotheque record. The Album Award Feature should not operate and the facsimile lights should be "out".
2. Place the Discotheque Switch in the "Normal" position. Select one Single, one Album and one Discotheque record. The mechanism should play these three records plus the two it did not play in the first test. The Album Award Feature operates normally.

DISCOTHEQUE DANCE CONVERSION KIT, Type DDC1K

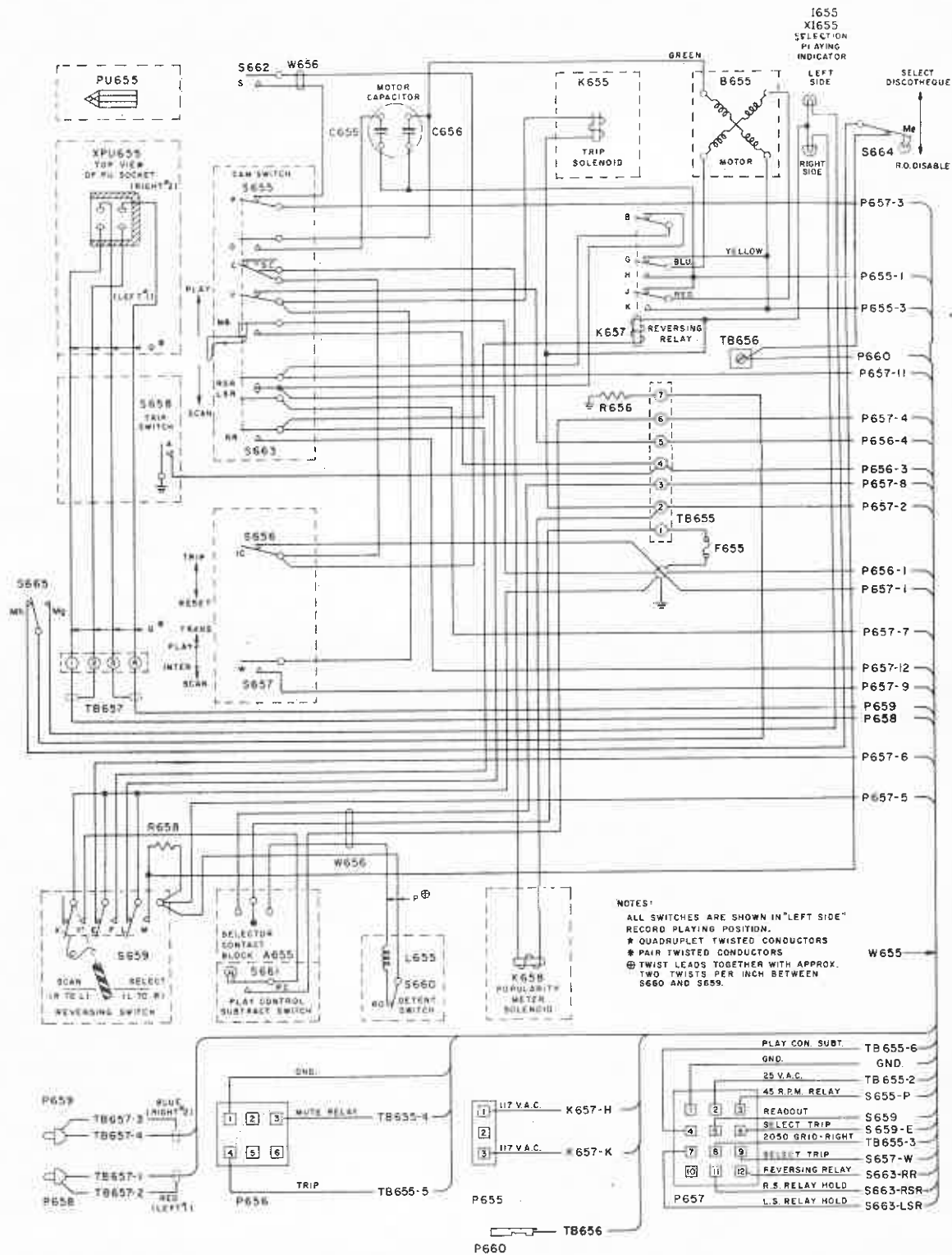


Figure 6. Select-O-Matic Mechanism Schematic.